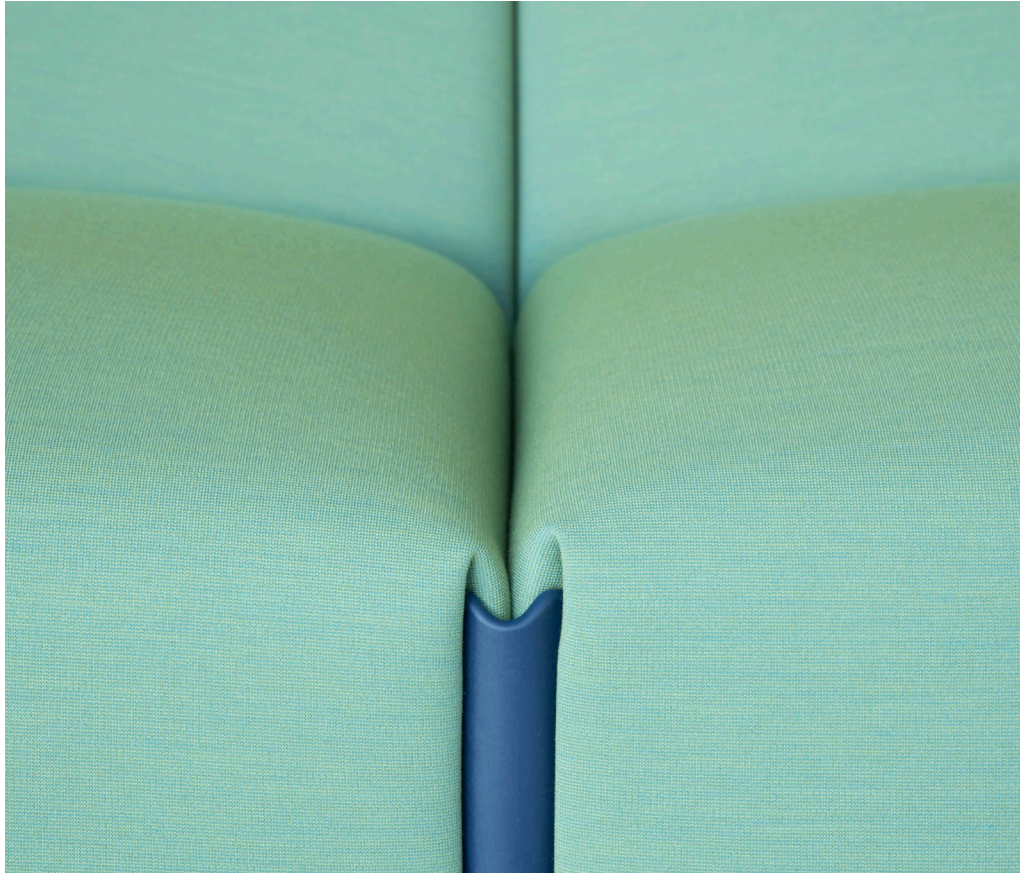


Information



Product

Costume comes with a total of four different elements: the actual seating module, which can be completed with a left or right armrest and an ottoman. A connector of plastic, which is pushed into the slots on all four corners of the seat, serves to connect the pieces. Available in matching as well as in contrasting colours, it creates an aesthetic feature. The four elements can be assembled to form numerous combinations depending on requirements and space.



A connector
of plastic
serves to



join the
pieces one to
each other.





PRODUCT CARE

We recommend using a soft rag, either dry or wet. When needed, use ph-balanced soap diluted in water. Do not use abrasive sponges as they may leave scratches. Avoid using acidic products, solvents and products containing ammonia. Periodic and correct maintenance allows the product to keep it in good shape and lengthens the performance.

WARNING

Do not use different cleaning products from the ones mentioned above. Do not use the product in an improper way. Do not place hot objects on it, sit on the back, stand on it or use the product as a ladder. Once disused, please make sure that this product is disposed in an environment-friendly way.





Fidivi One



Covered in Fidivi One (8504)

For contract and domestic use

Composition: 100% recycled polyester
 Width: 150 cm
 Weight: 525 g/ lin.m, 350g/m2
 Abrasion: 100.000 Martindale rubs, EN ISO 12947-2
 Pilling: 2000 rubs, Note 5, EN ISO 12945-2
 Lightfastness: Note 6, ISO 105-B02
 Fastness to rubbing: Note 4-5, ISO 105-X12
 Flame resistance: UNI 9175 Class 1 IM, EN 1021-1 & 2, CRIB 5, BS 7176 Class Medium Hazard, California TB 117-2013



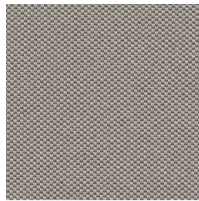
Torri Lana Dato



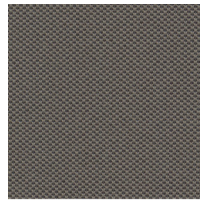
Covered in Torri Lana Dato (263)

For domestic use

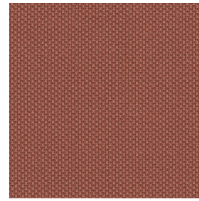
Composition: 54%CO, 22%VI, 6%WO, 12%LI, 5%PC, 1% PA
 Width: 140 cm+/- 3%
 Weight: 860 gr/ml - 614 gr/sqm +/- 5%
 Repeat: warp cm - weft cm
 Abrasion: 35000 cycles +/- 10%
 UNI EN ISO 12947-2:2000
 Dry clean fastness: Colour change 4-5
 UNI EN ISO D01:1995
 Rub fastness: Dry 4-5 | Wet 2-3 (Black WET 2)
 UNI EN ISO 105-X12:1995
 Flame resistance: BS 5852:2006 CIGARETTE
 BS 5852-1 (1979) MATCH
 BS 5852:2006 MATCH
 CAL TB 117:2013 (barrier material required)
 Pilling: grade 4 (change at 5000 turns)
 UNI EN ISO 12945-2:2002
 Lightfastness: Light colour 4-5 / Medium-Dark colour 5 -
 UNI EN ISO 105-B02
 Fastness to rubbing: Dry 4-5 / Wet 2-3 (Black WET 2) UNI
 EN ISO 105-X12:1995



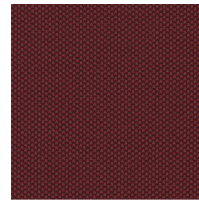
1506



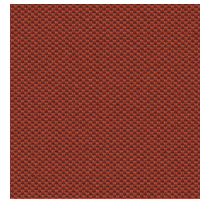
2519



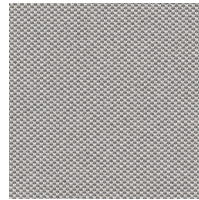
4037



4503



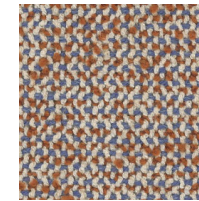
4566



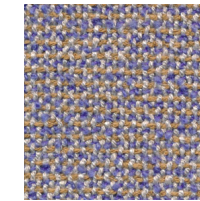
8504



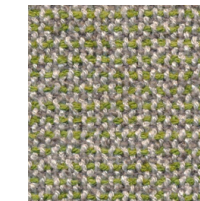
087



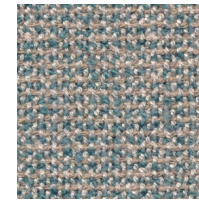
263



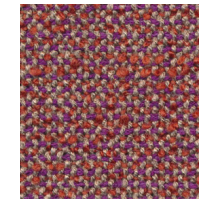
282



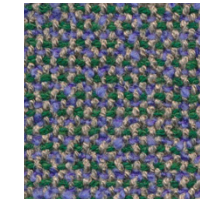
283



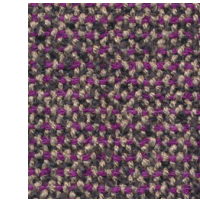
284



302



304



306

Kvadrat Uniform Melange



Covered in Kvadrat-Uniform Melange (963)

For domestic use and if treated for contract use

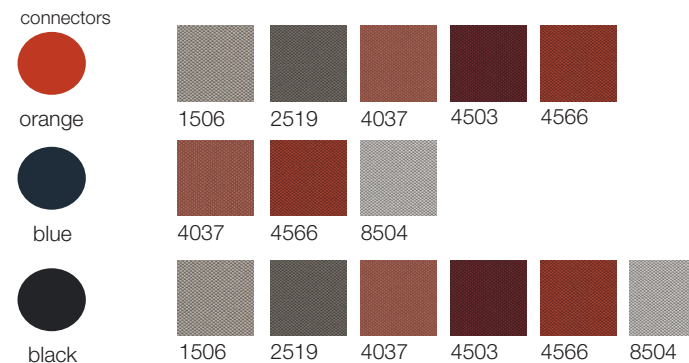
Composition: 68% New wool, 22% Nylon, 10% Polyester
 Yarn type: Worsted
 Binding: Knit
 Width: 165 cm
 Weight: Approximately 870g/ lin.m
 Cleaning: Vacuuming and dry cleaning
 Abrasion: Approximately 100.000 Martindale rubs, EN ISO 12947
 Pilling: Note 4, EN ISO 12945
 Lightfastness: Note 6, ISO 105-B02
 Fastness to rubbing: Note 4-5, ISO 105-X12
 Flame resistance: EN 1021-1/2, BS 5852 part 1, DIN 4102-B2, US Cal. Tech. Bull. 117
 IMO FTP Code part 8, BS 5852 Crib 5 with treatment



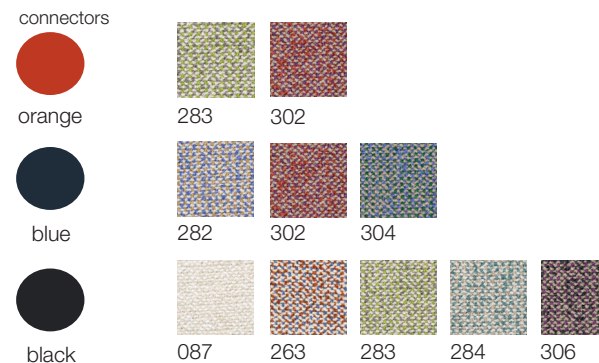
Combination of fabric and connectors

Stefan Diez and Magis propose different combinations of fabric and connectors; nevertheless, clients have the freedom to create their own combinations.

Fidivi - One



Torri Lana Dato



Kvadrat Uniform Melange

